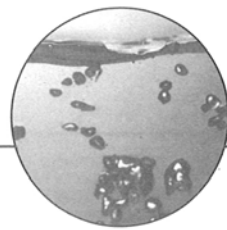
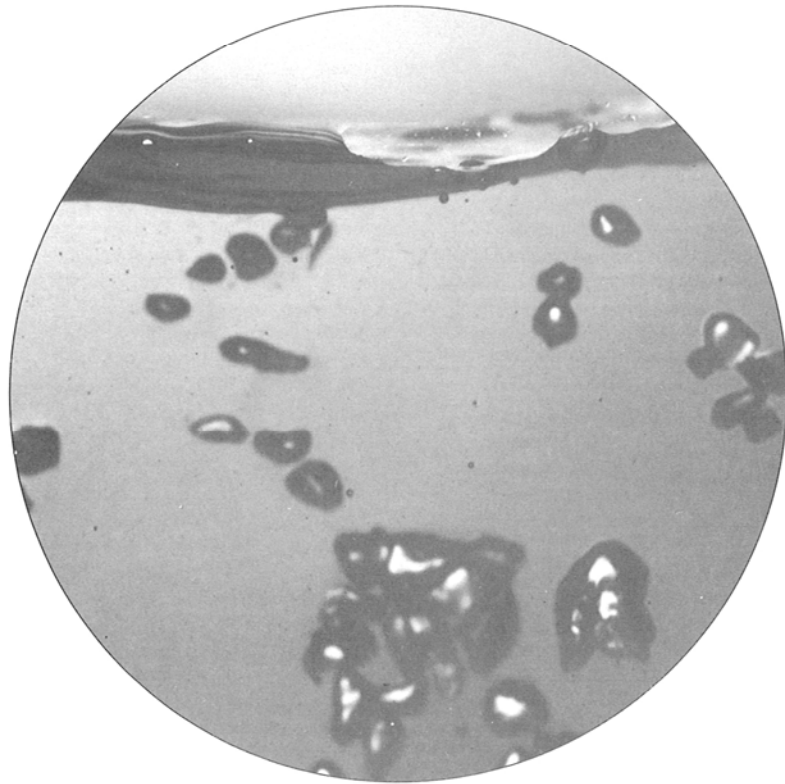


cloer



Electric Kettle

Dear Customer

We will hope you will enjoy your new Cloer Mona Series electric kettle.

Your Cloer Company

IMPORTANT SAFEGUARDS

When using electrical appliances, basic safety precautions should always be followed, including the following:

1. Read all Instructions.
2. Do not touch hot surfaces. Use handles or knobs.
3. To protect against fire, electric shock and injury to persons do not immerse cord, plugs, or THE KETTLE in water or other liquid.
4. Close supervision is necessary when any appliance is used by or near children.
5. Unplug from outlet when not in use and before cleaning. Allow to cool before putting on or taking off parts, and before cleaning the appliance.
6. Do not operate any appliance with a damaged cord or plug or after the appliance malfunctions, or has been damaged in any manner. Return appliance to the nearest authorized service facility for examination, repair or.
7. The use of accessory attachments not recommended by the appliance manufacturer may result in fire, electric shock or injury to persons.
8. Do not use outdoors
9. Do not let cord hang over edge of table or counter, or touch hot surfaces.
10. Do not place on or near a hot gas or electric burner, or in a heated oven.
11. Always attach plug to appliance first, then plug cord into the wall outlet. To disconnect, turn any control to "off" then remove plug from wall outlet.
12. Do not use appliance for other than intended use.
13. Scalding may occur if the lid is removed during the brewing cycles.

SAVE THESE INSTRUCTIONS

EN

HOUSEHOLD USE ONLY

- Using electrical equipment can be dangerous;
- Please read the instructions carefully before use;
- The appliance is only to be used for the purposes described in these instructions;
- Children do not realize the dangers associated with electrical appliances;
- Never allow children to work with electrical equipment without supervision;
- In the case of obvious damage to the appliance or the cable, consult an electrician;
- Repairs to electrical equipment may only be carried out by a properly trained person;
- Repairs, which are improperly carried out, can result in considerable danger for user;
- Use the appliance only on the voltage specified on the identification plate;
- The appliance gets hot during use; touch only the handles or the control knob;
- Never use the appliance in the open air;
- The boiler gets hot during use; therefore do not touch the appliance except the handle;
- Use only on a dry, anti-slip, level surface;
- Do not fill to above the mark "MAX", because there is danger that the water could boil over (Danger of scalding!);
- Never switch on the appliance when its lid is open;
- Only suitable for water-never put other liquids in the kettle;
- Do not cover slits/holes in the area of the switch;
- Do not use outside;
- Descale the jug kettle regularly;

Basic safety information

- **Read all instructions carefully.**
- This electrical appliance is intended for **private use only** and not for commercial use.
- Repairs to Cloer electrical appliances may be performed only by authorized Cloer dealers or Kitchen Resource, exclusive distributor. Unauthor-

EN

ized repairs can pose serious risks to the user and will void your warranty.

- Operate the appliance only with standard power outlets. Make sure that the voltage on the rating plate corresponds to the voltage of your power supply.
- The appliance is equipped with a "Y" type electric cord. If this cord is damaged, it must be replaced by an authorized Cloer dealer or Kitchen Resource, exclusive distributor, to prevent the danger of electric shock.
- Unplug the unit from the wall socket:
 - in case of a malfunction.
 - if the appliance is not used for an extended period.
 - before cleaning.
- Never allow children to operate electrical appliances.
- This appliance is not intended for use by persons, (including children), with limited physical, sensory or mental abilities or who lack the necessary experience and/or skills unless these persons act under the supervision of a person responsible for their safety or they were instructed by such a person on how to use the appliance.
- Children should be supervised to prevent them from using the appliance as a toy.
- Protect the appliance from moisture (splashing water, rain, etc.).
- Allow the appliance to cool completely before cleaning or putting it away.

Power Cord

- a) A short power-supply cord (or detachable power-supply cord) is provided to reduce risks resulting from becoming entangled in or tripping over a longer cord.
- b) Longer detachable power-supply cords or extension cords are available and may be used if care is exercised in their use.
- c) If a long detachable power-supply cord or extension cord is used,
 - 1) The marked electrical rating of the detachable power-supply cord or extension cord should be at least as great as the electrical rating of the appliance,
 - 2) If the appliance is of the grounded type, the extension cord should be a grounding-type 3-wire cord.
 - 3) The longer cord should be arranged so that it will not drape over the counter top or table top where it can be pulled on by children or tripped over.

Before using the first time

- **Important:** Please read the instructions carefully before use.
- Completely unroll the cable.
- Throw away the first kettle of water after boiling.
- Remove all packing material and stickers.

Safety notices for use of the contact base / electric kettle

- Do not fill the electric kettle with water past the MAX marking. **Scalding may result from water boiling over.**
- Always remove the electric kettle from the contact base before filling with water.
- This electric kettle may only be used for heating water.
- Use the electric kettle only with the provided contact base.
- Before operating the machine, make sure that the contact base is dry.
- Please make sure that water is never spilled on the contact base.
- If water is accidentally spilled onto the contact base, proceed as follows:
 - Unplug the unit from the wall socket.
 - Dry the contact base with an absorbent dry kitchen towel.
 - Dry the surface beneath the contact base.
 - Plug the unit into the wall socket again.

Never operate the electric kettle without the lid closed, otherwise the device will not shut off automatically when the water boils.



CAUTION!

The surface is hot during operation. Only touch the device at its handle.

Boiling water

- Open the lid.
- Fill the kettle.
- This can be done with the lid or via the large spout.
- Completely unroll the cord.
- Put the cordless model on its base.
- Plug in the appliance. **Warning:** appliance becomes hot during use.
- Switch on the kettle.
- The indicator lamp comes on.
- When the water boils, the appliance switches off automatically.

- Water can be poured out with the lid on.
- The cordless model can easily be removed from its base.
- The base remains near the socket. After use, the kettle should be replaced on its base at once, and it is immediately ready for use again.
- Heating can be stopped at any time by operating the switch.

Using your kettle

- The appliance is only suitable for heating and boiling water.
- Do not use any other liquids. The heating element must be covered with water ("0.5 litre" or above the minimum level on the gauge). Otherwise there is danger of overheating.
- Should the boil-dry protection operate, allow the jug kettle to cool down. The appliance will be ready for use automatically.
- The water gauge will show you how much water you have to put in the kettle.

Overheating protection device

The electric kettle is equipped with a double-action overheating protection device. In the event that you accidentally operate the electric kettle without water or if the water level is too low, causing the water to evaporate during boiling, the device will automatically switch off for your safety. The device will be ready to operate once it has been filled with cold water.

Cleaning

- Before cleaning unplug the appliance.
- Allow it to cool down.
- Wipe it inside and out with a soft cloth.
- Descale your kettle weekly.
- Cover the heating elements with vinegar water solution, (2/3 part water, 1/3 part vinegar).
- Boil up the solution two or three times, be careful that it does not boil over.
- Rinse out the appliance and wipe with a soft cloth.
- Operating, cleaning, user maintenance and any other servicing should be performed by an authorized service representative.

Decalcifying

If you have hard water, the electric kettle should be decalcified regularly (depending on the hardness of the water, about every 2 - 3 weeks). Use a commercially available liquid decalcifying

product (do not use chemical decalcifiers) and follow the manufacturer's instructions.

Tip: Mild calcium deposits can also be removed with a mixture of 5 to 6 tablespoons of vinegar in 2 cups of water.

Please observe the following when decalcifying the machine:

- First, pour cold water into the electric kettle (if the decalcifier foams excessively, use only 2 cups of water).
 - Briefly bring it to a boil.
 - Now, add the decalcifier and let the kettle stand for a while.
- CAUTION:** Do not bring this mixture to a boil.
- After decalcifying, rinse the pot twice with clear water.

Do not clean the electric kettle with heavily abrasive cleaners. They will scratch the appliance.

Note: Regularly decalcifying your electric kettle will reduce the electricity used and prolong the life of the appliance. The calcium content of water varies from region to region. Please consult your local water works or utility works for information on water hardness.

In the event of malfunctions due to calcium deposits, the guarantee will be voided!

Storage

Unplug and store in its box or in a dry place. Store the cord loosely coiled; never wrap it tightly around the unit. Do not put any stress on cord where it enters the appliance as it may cause the cord to fray and possibly break.

Problem / Cause / Solution

Problem	Possible cause	Solution
Electric kettle does not function	Appliance is not plugged in	Plug the power plug into the wall socket
Water bubbles over in the electric kettle	Too much water has been added	Add less water, do not exceed the Max marking

EN

Problem	Possible cause	Solution
Electric kettle makes loud noises during operation	Too much calcification inside the electric kettle	Decalcify the electric kettle
White spots form at the bottom of the electric kettle	Too much calcification inside the electric kettle	Decalcify the electric kettle

Specification

Rating	120V
Capacity	1.7 L / 7 cup
Total power consumption	1500 W

1. Do not immerse in any liquid.
2. If the kettle is overfilled, boiling water may be ejected.
3. The kettle is only to be used with the stand provided.
4. If the supply cord is damaged it must be replaced by the manufacturer or its service agent or a similarly qualified person in order to avoid a hazard.

Environmentally friendly disposal

We use only environmentally friendly packaging for the shipping of our appliances. Please recycle cardboard/paper and plastic packaging appropriately.



CAUTION!
Electrical appliances should not be disposed of with the household trash.

Electrical appliances contain valuable raw materials. When an appliance is worn-out, please take it to a recognized recycling facility. Please consult the local authorities for information on recycling appliances.

Customer service

In the event that your Cloer appliance becomes defective, please contact your Cloer dealer or Kitchen Resource, exclusive distributor.

Conditions of warranty

Cloer warrants this kettle to be free from defects of workmanship and material under normal use and service for the period of (2) two years starting from the date on which the product was first purchased by an end consumer. The warranty period will not be extended or begin anew or in any other way be affected by the subsequent sale, repair or replacement of the product.

This kettle is required to be operated solely on the electric current indicated on the base plate. Damage or malfunction caused by use on other electrical current is excluded from this warranty. Read all instructions before attempting to use the product.

This warranty does not apply to damage resulting from improper use, accident, shipping, normal wear, neglect, insufficient decalcifying, use of unsuitable accessories, commercial use, incidental or consequential damages or modification of product without authorization.

The repair will be effected by repairing or replacing defective parts. Any parts replaced will become the property of Cloer. All further claims of any type, especially claims for indemnification, are not valid.

This warranty applies to products purchased and operated in the United States or Canada. Transportation, handling, and/or shipping costs are not included in this warranty. For warranty claim, return product, securely packed, along with a dated proof of purchase, to where you purchased it, or to:

Kitchen Resource / 180 West 500 North / North Salt Lake, UT 84054
 1.800.692.6724 or 1.801.383.1922 or service@kitchenresource.com

Keep Dated Sales Receipt for Warranty Service. For Household Use Only

A calcination of the appliance leads to more noise during the boiling process. Furthermore the kettle needs more time for heating the water and stops working eventually.

Regularly decalcifying your electric kettle (ca every 2-3 weeks) will reduce the electricity used and prolong the life of the appliance.

In the event of malfunctions due to calcination, the guarantee will be voided!